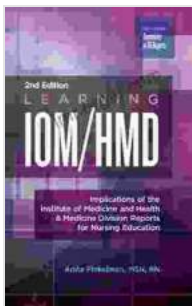


Unveiling the Far-Reaching Implications of the Institute of Medicine and Health Medicine Division Reports

: A Catalyst for Advancement

In a rapidly evolving healthcare landscape, the reports issued by the Institute of Medicine (IOM) and the Health Medicine Division (HMD) have emerged as beacons of knowledge and inspiration. These groundbreaking documents have catalyzed a profound shift in healthcare policy, practice, and research, paving the way for transformative advancements in patient care and public health.



Learning IOM/HMD: Implications of the Institute of Medicine and Health & Medicine Division Reports for Nursing Education by Terry L. Anderson

★★★★★ 5 out of 5

Language : English
File size : 6976 KB
Text-to-Speech : Enabled
Enhanced typesetting : Enabled
Print length : 328 pages
Screen Reader : Supported

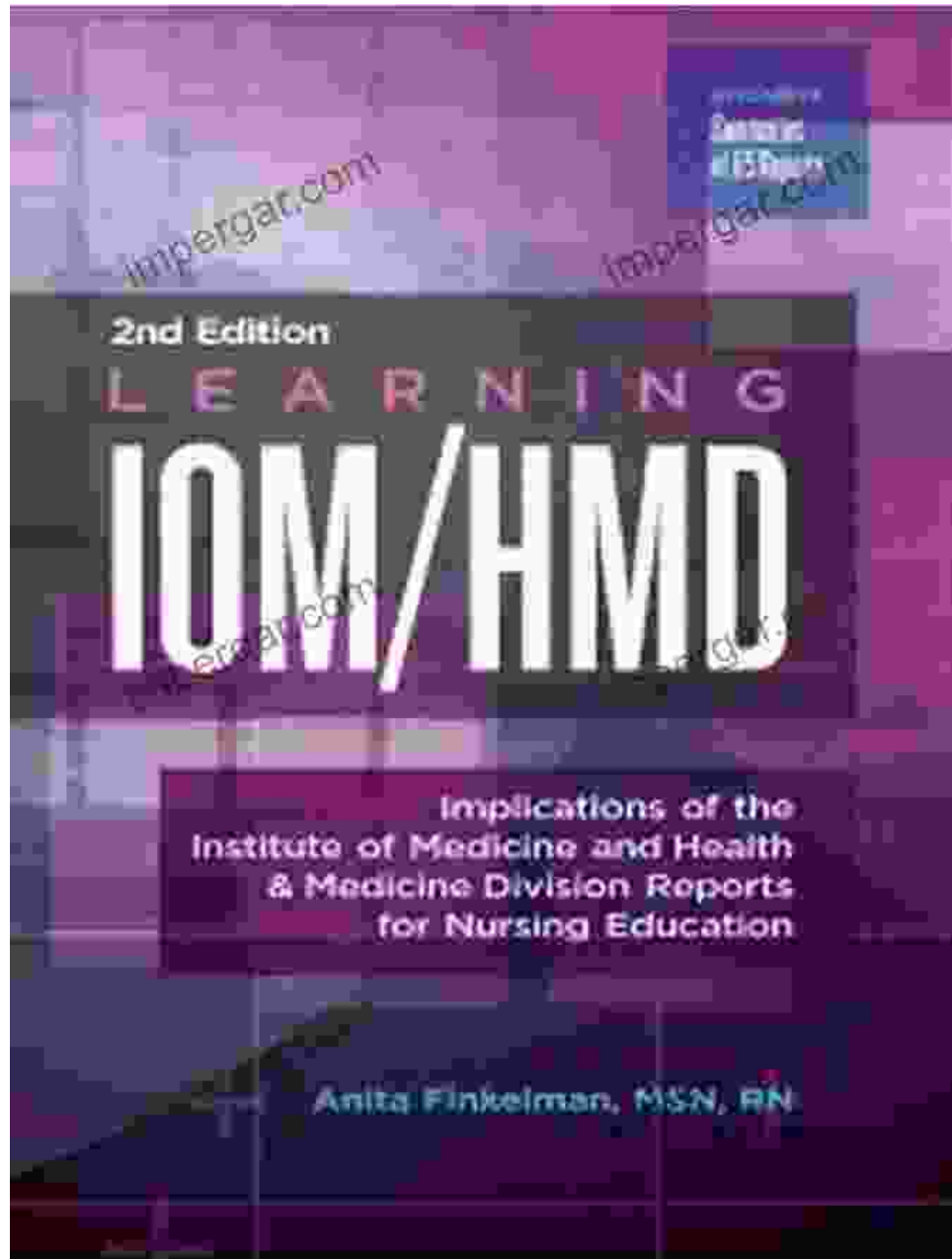


This comprehensive article delves deep into the implications of these pivotal reports, exploring their profound impact on:

- The transformation of healthcare delivery models

- The integration of evidence-based medicine into clinical practice
- The advancement of research and innovation in healthcare
- The shaping of public health policies and interventions

Transforming Healthcare Delivery: A Patient-Centered Approach



The IOM and HMD reports have been instrumental in fostering a fundamental shift in healthcare delivery, placing the patient at the heart of decision-making.

Key recommendations emphasize:

- Personalized treatment plans tailored to individual needs
- Improved communication and collaboration between patients and healthcare providers
- Enhanced access to affordable, high-quality care
- Greater investment in community-based health services

By empowering patients and redefining the patient-provider relationship, these reports have laid the groundwork for a healthcare system that is more responsive, equitable, and effective.

Integrating Evidence-Based Medicine: Advancing Clinical Practice



The reports have played a pivotal role in promoting evidence-based medicine, ensuring that clinical decisions are informed by the latest scientific findings.

Recommendations include:

- Rigorous evaluation of medical interventions
- Incorporation of research evidence into clinical guidelines
- Continuing education for healthcare professionals
- Patient engagement in decision-making based on evidence

By integrating evidence-based medicine into clinical practice, the reports have elevated the quality of care, improved patient outcomes, and fostered a culture of continuous learning and improvement.

Advancing Research and Innovation: Unlocking Breakthroughs



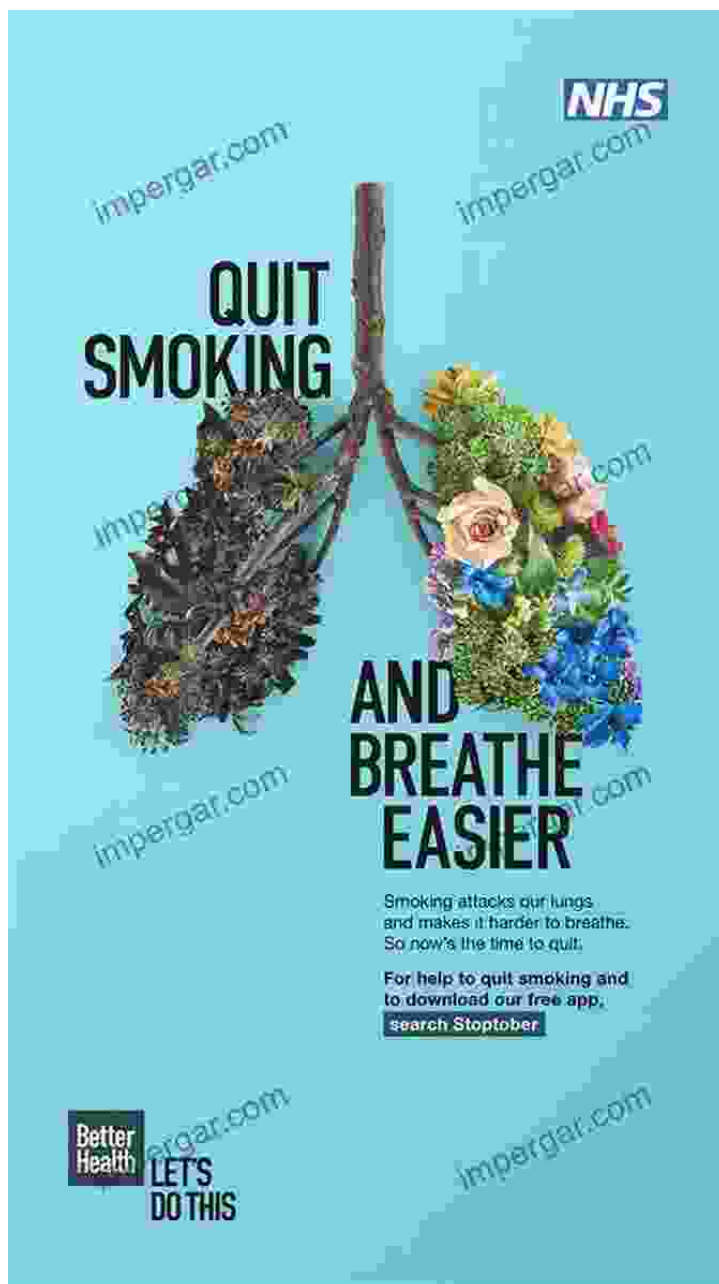
The IOM and HMD reports have recognized the crucial importance of research and innovation in driving healthcare advancements.

Recommendations focus on:

- Increased funding for basic and applied medical research
- Collaboration between academia, industry, and government
- Removal of barriers to innovation, such as regulatory hurdles
- Translation of research findings into practical applications

By fostering a conducive environment for research and innovation, the reports have paved the way for groundbreaking discoveries, new therapies, and transformative technologies that promise to revolutionize healthcare.

Shaping Public Health Policies: Improving Population Health



The IOM and HMD reports have extended their influence beyond clinical care, shaping public health policies and interventions aimed at improving

the health of entire populations.

Recommendations include:

- Comprehensive tobacco control measures
- Healthy food and beverage policies
- Access to affordable housing and clean air
- Community-based health promotion programs

By addressing the social determinants of health and promoting healthy behaviors, the reports have contributed to a broader understanding of public health and its impact on overall well-being.

: A Legacy of Impact and Future Promise

The Institute of Medicine and Health Medicine Division reports stand as a testament to the profound influence that evidence-based research and policy recommendations can have on healthcare and public health.

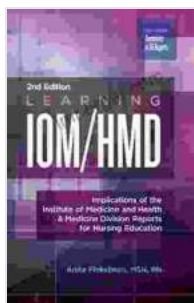
Their transformative insights have:

- Improved the quality and efficiency of patient care
- Advanced the field of evidence-based medicine
- Accelerated research and innovation in healthcare
- Shaped public health policies and interventions

As we navigate the ever-changing healthcare landscape, the implications of these reports continue to guide us towards a future where patients are

empowered, evidence informs practice, innovation flourishes, and the health of our communities is prioritized.

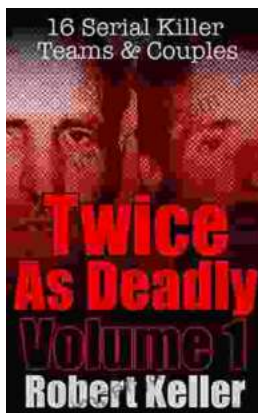
By embracing the transformative power of these reports, we can unlock unprecedented opportunities for advancing healthcare and creating a healthier world for all.



Learning IOM/HMD: Implications of the Institute of Medicine and Health & Medicine Division Reports for Nursing Education by Terry L. Anderson

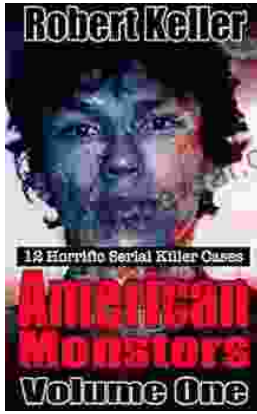
★★★★★ 5 out of 5

Language : English
File size : 6976 KB
Text-to-Speech : Enabled
Enhanced typesetting : Enabled
Print length : 328 pages
Screen Reader : Supported



16 Serial Killer Teams and Couples: A Spine-Chilling Journey into Murderous Duo

From the annals of true crime, the stories of serial killer teams and couples stand out as particularly disturbing and captivating. These...



12 Horrific American Serial Killers: A Spine-Chilling Journey into the Depths of Evil

Immerse yourself in the darkest recesses of humanity with 12 Horrific American Serial Killers. This gripping book takes you on a chilling journey into the twisted minds of some...